

50 & THRIVING!
1970-2020

sfc SIXTH form COLLEGE
CITY OF STOKE-ON-TRENT

MAKE YOUR MARK



16-19 PROSPECTUS 2020



WELCOME

A CARING COMMUNITY DELIVERING EXCELLENCE & INSPIRING FUTURES

For more information visit www.stokesfc.ac.uk

WELCOME

Thank you for thinking about studying at the City of Stoke-on-Trent Sixth Form College.

As the first purpose built Sixth Form College in the country, we have been delivering post-16 education to students for 50 years. We have helped over 30,000 young people reach their potential by progressing on to universities, varied apprenticeships and impressive jobs. With a wealth of experience, we are experts in the field of providing a high quality, holistic education for all.

This education goes well beyond success in qualifications, encompassing a wide range of clubs, student-led societies, trips, work experience and extra-curricular experiences to inspire and develop the wider skills of every student.

We have high expectations of all our students; we will help you develop into independent learners through a range of tasks and activities that will bring out the best in each individual. At the same time, personal support is never far away, and staff always operate an open-door policy so that you can get help and advice whenever you need it. All of this is supported by a range of workshops and support sessions throughout the week.

So, don't be afraid to ask questions, try out your own ideas and learn from your mistakes, as this will give you the best possible preparation for success in your subjects. We can build a timetable around your needs; offer endless opportunities for you to try new things and to find out about your future career.

We hope to inspire you to become life-long learners, whether inside or outside of a classroom, so that you can develop the skills and determination to achieve far more than you ever expected. What's more, we promise to treat each student as an individual and to welcome you into our learning community.

I look forward to meeting you all.



Mark Kent – Principal

MAKE YOUR MARK

MARK UP YOUR PROSPECTUS TO EMPHASISE SECTIONS OF PARTICULAR INTEREST TO YOUR ACADEMIC JOURNEY. DRAW ARROWS, UNDERLINE, CIRCLE AND MAKE NOTES, THE PAGES ARE YOURS TO MAKE YOUR MARK ON!

CONTENTS

Make Your Mark – Why Us	4–5	Our Courses	24–25
Outstanding Facilities	6–7	Business, Finance & Law	26–29
Travelling to College	8–9	Creative & Performing Arts	30–35
We Get Results	10–11	Education, Society & Health	36–39
Achieve More	12–13	Humanities, Languages & Literature	40–43
Unlock Your Potential	14	Sports & Leisure	44–47
Futures Programme	15	Stem (Science, Technology, Engineering & Maths)	48–53
Supporting Every Step	16–17	Level 3 Foundation Programme	54–55
A Few Words to Parents	18	Access to Learning	56–57
Potteries Educational Trust	19	What's Next?	58
Choosing Your Course	20–21		
Programme of Study	22–23		

FIND OUT MORE

VISIT OUR OPEN EVENTS

- Wednesday 9th October 2019
 - Thursday 7th November 2019
 - Tuesday 3rd December 2019
 - Thursday 19th March 2020
- All Open Events take place from 5pm – 7pm



MAKE YOUR MARK

WITH A WORLD

OF OPPORTUNITY

As the only purpose built sixth form college in Staffordshire, we offer a wide range of specialist courses that can be taken in any combination.

But that's not all we're about...

Located in the heart of the University Quarter, you are guaranteed a vibrant, safe and attractive learning environment where you can access top-class equipment, including university standard science labs and sports facilities.

Each year many of our students progress onto top universities such as Oxford, Cambridge and a range of Russell Group Universities as well as other prestigious institutions across the UK and abroad.

HERE ARE SIX REASONS TO STUDY AT THE CITY OF STOKE-ON-TRENT SIXTH FORM COLLEGE.

HIGH QUALITY TEACHING IN STATE-OF-THE-ART FACILITIES

Our staff are passionate about their subjects and are specialists at communicating their expertise whilst teaching in university standard facilities.



EXCELLENT RESULTS

96% Pass rate for A Level courses

Over 1/3 of A Level students achieved the highest grades A*-B

62% of BTEC students achieved the highest grades of Distinction*/Distinction

98% BTEC pass rate – top class results across all BTECs



MORE THAN JUST QUALIFICATIONS

College life is an exciting mix of learning and personal enrichment, providing you with plenty of opportunities to branch out and try new things all whilst developing essential attributes and social skills.



FUTURE SUCCESS

Through our Futures Programme, we will inspire you to develop essential employability skills and a life-long love of learning. Our students consistently continue onto outstanding progression routes. Students will also receive a range of opportunities to support their development and aspirations.

CARING COMMUNITY

All students will receive excellent support, which includes access to an on-site counsellor, progress coaches, careers advisors, financial and learning support as well as open-door access to teachers and support staff.



OUR BROAD RANGE OF COURSES

We offer the widest choice of A Levels in the area. We are also one of the first Sixth Form Colleges to be offering the new T Level qualifications as well as BTEC and GCSE courses, all of which can be taken in any combination.





OUTSTANDING FACILITIES

The Sixth Form College has been designed to give you a learning environment in which you can thrive, create your future, and feel comfortable in being who you are. Whether you need a quiet place to complete your coursework, a studio to practise your dance routine in, or a social area to grab a bite to eat, there's a space for you.

SCIENCE CENTRE

Strengthen your learning through practical experiments that will prepare you for study at higher education or for employment. Shared between Staffordshire University and the Sixth Form College, our Science Centre features state-of-the-art equipment that will help you boost your abilities and take your studies to the next level.

PLACES TO STUDY

Our Learning Resource Centres, Quiet Study Areas and Learning Pods are equipped with everything needed to help you focus on your studies. These include: computers, high speed internet access as well as an extensive selection of books and set texts. In these spaces you can work on coursework, develop your subject understanding and carry out your own research.

REFECTORY & ROEBUCK CAFÉ

We offer a broad selection of fresh, healthy lunch choices, and a range of hot food and sharing options for all tastes. Recharge and refuel in our very own Costa Coffee selling a range of drinks and snacks as well as lots of 'grab and go' offers.

TOP CLASS SPORTS FACILITIES

Whether you are studying a sport related course, are an elite athlete or simply want to keep fit, you will have access to the facilities at Staffordshire University and Fenton Manor Sports Complex. With all-weather pitches, badminton and squash courts, fully equipped gyms, a 25m swimming pool, studios and sports arenas, you will experience some of the best sports facilities in Staffordshire.

CREATIVE & PERFORMING FACILITIES

Our high-quality studios, rehearsal and performing spaces will support you in developing your expertise as an artist and performer. These include: a drama studio, dance studio, media editing suite, production and art workshops, games design suite, music practice and recording rooms.



COMING SOON

The City of Stoke-on-Trent Sixth Form College continues to grow and offer new courses. To keep our facilities up to date with these exciting curriculum changes, we are opening a brand new, state-of-the-art extension. Featuring multifunctional learning spaces, a Higher Education hub and a vibrant social area.





WE'RE CLOSER THAN YOU THINK

TRAVELLING TO COLLEGE

BY BUS

Travelling to and from College is easy. Many local bus routes stop directly outside the College. A useful link for bus and train travel is the 'Traveline Midlands Journey Planner.' It will show you all routes using all forms of public transport. Visit www.travelinemidlands.co.uk

BY CAR

Parking spaces at our main campus on Leek Road are available for students who meet our qualifying criteria. Students can also be dropped off at the College's drop-off point, at our main campus. Alternatively, students are entitled to reduced rate parking at Fenton Manor Sports Complex, which is a short, safe walk along City Road.

BY TRAIN

The Sixth Form College is located next to Stoke Railway station with popular stops only a short distance away. Use the 'journey planner' on www.nationalrail.co.uk to plan your College journey.

GOOD TO KNOW: National Rail has launched the 16-17 Saver. Travelling to College just got 50% cheaper. Find out more at www.nationalrail.co.uk

DISCOUNTED TRAVEL

Discounted travel passes are available to all students. These allow unlimited travel 24 hours a day, seven days a week within a specified area and are available to purchase in College.

Students in receipt of the College Bursary will receive free travel to and from College. More information about the College Bursary can be found on our website at www.stokesfc.ac.uk

Local Education Authorities also offer assisted travel schemes for students who meet their selection criteria.

GREENER TRAVEL

We support sustainable travel and encourage students and staff to cycle or walk to College. We have invested in secure and covered cycle parking facilities, lockers and showers which are available for you to use.

FURTHER INFORMATION

If you have any questions about travel, would like any additional information or to apply for the College Bursary Scheme, then contact our Student Finance Desk on **01782 848736**.

TRAVEL BY TRAIN

KIDSGROVE 7 MINS
STONE 8 MINS

ALSAGER 9 MINS
STAFFORD 23 MINS

CREWE 24 MINS
UTTOXETER 25 MINS



WE GET RESULTS

Our students continue to excel in their studies. Excellent results in all areas provide students with opportunities to further their studies in higher education, gain employment or further training.

Performance across all Level 3 courses continues to be strong, with students completing BTEC courses achieving some of the best results in the area.

A LEVEL

Our students achieved a 96% A Level pass rate, with 35% securing A*-B grades. These results reflect the College's commitment to success and progress.

BTEC

86% of students sitting the more demanding, examined BTEC Courses achieved at least a Merit-Distinction*.

Our BTEC courses continue to produce the strongest results in the area, with a 98% overall pass rate.



The College has a great choice of subjects, amazing facilities and brilliantly supportive staff members. I could study my favourite subjects in the combination I wanted which was unique to this College. I have headed up the Debate Society and been part of the leadership team for the Musical Theatre Society which has made the experience so much more than just learning. After gaining three A* and two A grades, I can't wait to start my journey at the University of Warwick to study Modern Foreign Languages with Linguistics.

BEN BELFIELD

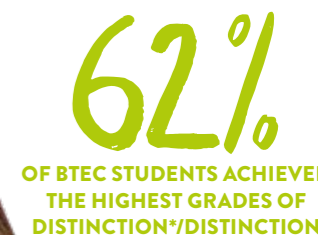
Previously: Leek High School
Studied: A Level Classical Civilisation, English Literature, French & German

RESULTS HIGHLIGHTS

- We continue to achieve excellent results in Biological Sciences, particularly in Biology, Chemistry and Psychology with in excess of 40% high grades awarded.
- The College's unique offer of specialist subjects such as Geology, German, French, Spanish, Music, Further Maths, Dance, Games Design and many more continuously see large numbers of students progress onto prestigious universities including Oxbridge and Russell Group.
- Our specialist curriculum subjects continue to produce top-class results with Computer Science (A Level and BTEC) placing in the top 25% in the country.
- Two thirds of Sport and Public Services BTEC Students achieved the highest grades of Distinction*/Distinction.
- The College continues to perform strongly in a range of A Level subjects including: Art, Geography, Media, PE, Product Design, Religious Studies, Psychology and Sociology.
- Excellent performance in a number of BTEC subjects including Applied Science, Health & Social Care, Graphics, Public Services, Performing Arts and Computing.
- Over 90% of Sixth Form College students applied for university courses this year.

86%

OF STUDENTS SITTING THE MORE DEMANDING, EXAMINED BTEC COURSES ACHIEVED AT LEAST A MERIT-DISTINCTION*



Throughout my time at College I have experienced plenty of opportunities to help me excel and reach my potential. Meeting inspirational speakers such as journalist Natasha Daniels really encouraged me to pursue a career in journalism and opened up a world of possibilities. I always dreamed of going to Oxford, but never thought it was achievable until joining the Sixth Form College. I was invited to attend a College trip to the University of Oxford Open Day and I can't thank staff enough for encouraging me to attend as it opened my eyes to what could be possible for me. I achieved two As and an A* and can't wait to start studying English Literature and English Language at the University of Oxford.

EMILY CORNE

Previously: Thistley Hough Academy
Studied: A Level English Language, English Literature & French



MORE THAN JUST QUALIFICATIONS

ACHIEVE MORE

Every year students come to the Sixth Form College with an amazing array of exceptional skills and abilities – academic, sporting, musical and many more. We will challenge you to aim high in many ways during your time with us, and for academically talented students we offer specific programmes to help you excel.

HIGH ACHIEVERS

If you have achieved high GCSE grades and aspire to apply for Oxford, Cambridge, Medical or Veterinary College, Russell Group universities or institutions renowned for specialisms within particular areas including international universities such as Stanford, you will be given individual mentoring, guidance and support.

The High Achievers Programme has been designed by staff who are Oxbridge graduates, and incorporates their knowledge and experience of university admissions processes and tests; providing support in preparation for university interviews. These include: BMAT, LNAT, UKCAT, PAT and TSA tests. High achieving students are encouraged to develop their academic interest through a dedicated lecture programme delivered by renowned academics and industry professionals, visiting from many universities and employers, including Oxbridge and other Russell Group universities. High achievers are also encouraged to complete renowned Extended Project Qualifications to stand out from the crowd.

For members of the programme, the College organises overnight stays to a number of prestigious institutions. This includes Cambridge, Oxford and other Russell Group universities.

HE+

The College is the regional hub for the University of Cambridge's prestigious programme for high achieving students. The programme gives students access to enrichment masterclasses delivered by Cambridge academics. Students also benefit from the opportunity to stay overnight at Cambridge and receive personalised support for their university application.

EXTENDED PROJECT QUALIFICATION

Boost your abilities, stand out from the crowd and get ready for university study with an EPQ. Focusing on a topic of your choice, you'll commit one hour per week to an independent research project. Working with a supervisor, you'll learn valuable research skills whilst expanding your subject knowledge. UCAS recognises EPQs as worth half of an A Level. Show universities your full potential by taking an EPQ.

89%

A*-B ACROSS ALL EPQs



The Sixth Form was a great environment to study, it's been challenging but equally rewarding, especially when you see results from your hard work. You are pushed academically both inside and outside of the classroom, but that encourages you to give 100% all of the time. Staff helped me to find extra-curricular courses that would help with my entrance exams to university. They really did go out of their way to support and encourage me. After achieving A* in all of my exams and passing my STEP entrance exams, I am looking forward to continuing my studies at the University of Cambridge to study Mathematics.

ISAAK FAIRCLOUGH

Previously: Clayton Hall Academy
Studied: A Level French, Further Maths, Maths, Physics & EPQ



For more information visit www.stokesfc.ac.uk



The College always put students first and provides many opportunities to enhance your experience, from subject related projects and work experience, to various sport activities that can run alongside your timetable. I was selected for the Talented Athlete Programme for basketball which has given me a fun and challenging experience along with my studies. I have been able to compete competitively in a sport that I'm passionate about all whilst progressing in my studies.

NTANDOYENKOSI NCUBE

Previously: Haywood Academy
Currently studying: A Level History, Product Design & Statistics

ELITE ATHLETE SUPPORT

At the Sixth Form College we take athlete support seriously and will work with you to ensure that you continue to enhance your abilities alongside your studies through our two dedicated support programmes.

TALENTED ATHLETE PROGRAMME

Students aiming to represent the College in regular competitive sport will experience quality coaching and access to top class sports facilities. The College competes at regional and national levels in football (male and female) basketball and netball through the Association of Colleges (AOC) leagues and one-off competitions.

JUNIOR ELITE SCHOLARSHIP PROGRAMME

To nurture the development of elite athletes who compete at county level or above, the College, in partnership with Staffordshire University, has created a Junior Elite Scholarship. As a member, you will experience a comprehensive programme of athlete support, which includes strength and conditioning reviews, nutrition and psychology workshops as well as complimentary gym membership.



MORE THAN JUST QUALIFICATIONS

UNLOCK YOUR POTENTIAL

Coming to College offers a unique opportunity to take part in a broad range of exciting activities, which will help you to develop your confidence, give you great employability skills and help you have fun, whilst making lasting friendships.

INTERNATIONAL ENRICHMENT

Every year you will have the opportunity to engage in international enrichment programmes, visiting exciting locations such as Washington, D.C., Gambia, Poland and Munich. By taking part you will discover the cultures of overseas communities whilst developing a rich global perspective. Universities and employers highly value these experience and the skills you will develop.

STUDENT VOICE

Want to represent your fellow students' views and get your voice heard? Stand for election as a Course Representative or as Student Governor. Every year we hold elections for these positions. As a Student Governor, you will represent students' views and act as a link between them and our Governing Body. As a Course Representative you will receive sought-after leadership training, listen to the views of other students on your course and feedback their comments and questions to staff during subject meetings and at Student Parliament.

MUSIC MAKING

Showcase your musical talents by performing in College productions throughout the year, or take up a spot on our second floor balcony during a lunch break and entertain the College.

SPORTS ENRICHMENT

Our extensive sports enrichment offers plenty of activities for you to get involved with from archery, horse-riding, ice skating, rock climbing, rugby, skiing, table tennis and tennis to name a few.

DUKE OF EDINBURGH

Fancy a challenge? Want to develop your leadership and teamwork skills? We also run Bronze, Silver and Gold Duke of Edinburgh Award.

MAKE YOUR MARK

DEVELOP TEAMWORK, SELF-CONFIDENCE AND CREATIVE SKILLS THROUGH OUR DIVERSE ENRICHMENT PROGRAMME.



CLUBS & SOCIETIES

You will have access to an array of clubs and societies as well as various sports enrichment activities at your fingertips. These will help you to develop your teamwork, self-confidence and creative skills all whilst having fun and making new friendships.

SOCIETIES CURRENTLY RUNNING

- Christian Union
- Creative Writing Society
- Current Affairs
- Debating Society
- Film Crew
- International Society
- Let's Connect
- Musical Theatre Society
- Medical, Dentistry & Veterinary Society (MDV)
- Mathematical Science, Engineering & Computing (MEC)
- Pride (LGBTQ) Society
- Society of Change



OUR NEW FUTURES ZONE OFFERS EXPERT CAREERS ADVICE FOR ALL YOUR EMPLOYABILITY AND PROGRESSION SUPPORT.

FUTURE SUCCESS

For more information visit www.stokesfc.ac.uk

FUTURES PROGRAMME

Our innovative Futures Programme has been designed to provide every student with maximum opportunities, and support, to explore your chosen subjects and career. It will enable you to discover different careers within a subject and encourage successful progression with the right skills, experience and qualifications combined.

DISCOVER MORE

Alongside your course combination, this exciting programme consists of an extensive array of specialist workshops and events, visits to workplaces and prestigious institutions, as well as lectures delivered by renowned guest speakers.

OUR FUTURES PROGRAMME INCLUDES:

- Additional qualifications:** To develop research, problem solving skills and communication skills.
- Immersion days:** A day in industry. Finding out in depth aspects of the profession while gaining valuable work experience.
- Showcase events:** This includes master classes, educational visits, practical or experimental work, and visits from guest speakers.
- Focused, career specific advice and guidance:** Accessible information to help students understand how to progress into different careers.
- Support for competitive progression:** Support and guidance to help students gain entry to highly competitive courses and universities.
- Work experience:** Engage in at least one week, or equivalent, work experience activity, including volunteering and mentoring.

SCHOOL

You may have the opportunity, through school, to engage with our Futures Programme, giving you a range of enrichment activities to best prepare you for life after school.

FUTURES ZONE

Located within the First Floor LRC, our new Futures Zone, is your one-stop shop for all employability, progression and Futures Programme advice and support. The base for our team of expert careers advisors, the Futures Zone contains the equipment and resources you need to discover and progress to your next step.

OUR INDUSTRY PARTNERS INCLUDE

- Carse & Waterman Productions
- The Sentinel
- NHS
- Michelin
- Staffordshire Police
- National Youth Theatre
- Virgin Trains
- Stoke-on-Trent City Council

SUPPORTING EVERY STEP

We want all of our students to enjoy their time at College and we are committed to providing a high level of personalised support, whether that is with your studies, your health and wellbeing or your finances. Our 'one stop' Student Services team are dedicated to providing friendly and professional advice and support.

PROGRESS COACH

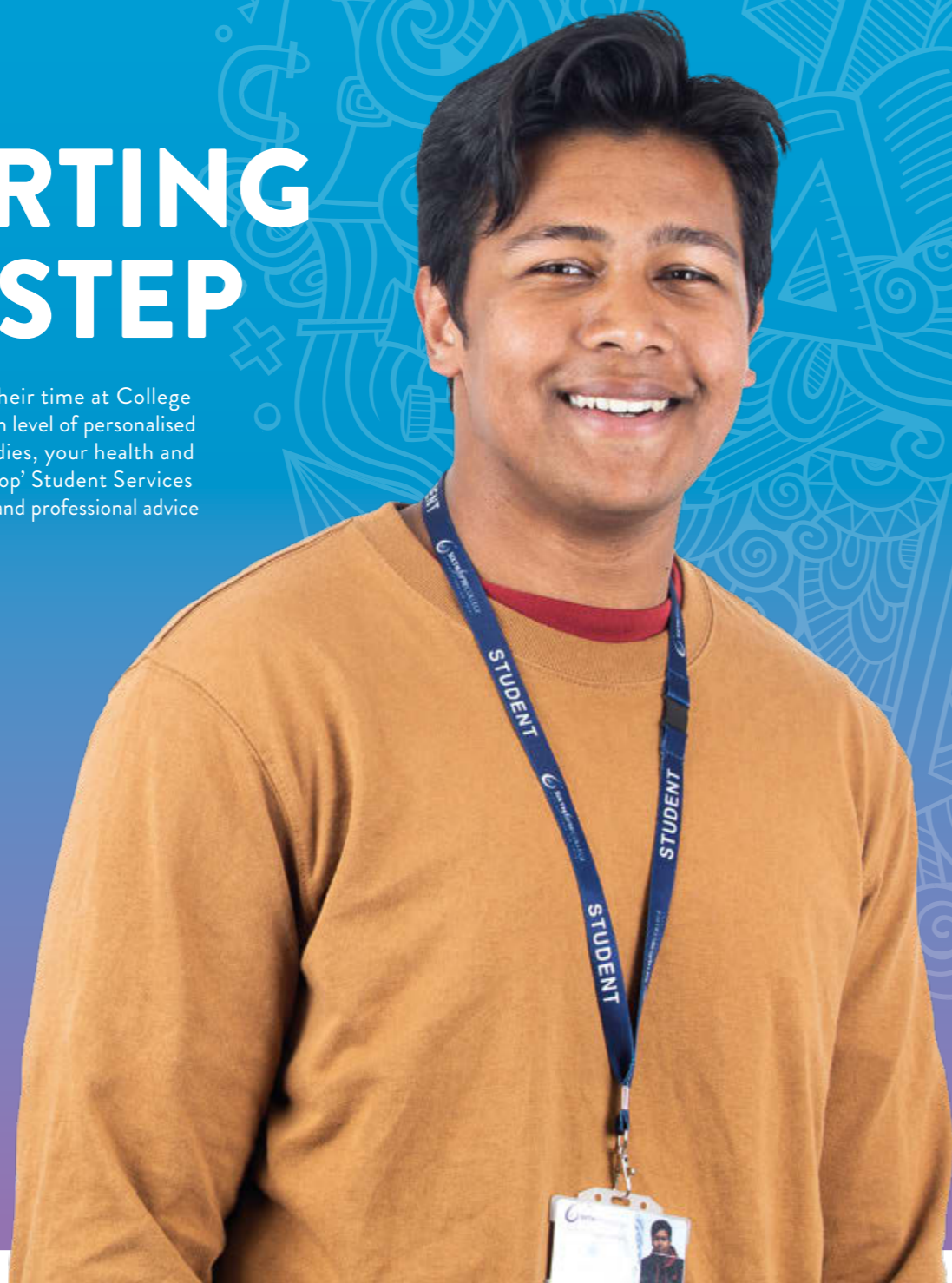
Every student has a Progress Coach who will meet with you on a regular basis, offering support and guidance to ensure that you reach your full potential.

CAREERS GUIDANCE

Based in our Futures Zone, our on-site Careers and Progression team are always available to help you research appropriate career plans and support you in taking up work experience opportunities.

EMOTIONAL WELLBEING

Our experienced team of counsellors and emotional wellbeing workers are available for group and one-to-one confidential support.



I was quite nervous and shy when I started at the College as I had only just moved over from Italy and I didn't know anyone at all. I was also apprehensive to speak in English as I was embarrassed to say something wrong, but the friends and the teachers that I met really encouraged me to "break the ice" and believed in me. The teachers listened to me and helped me to decide what courses were best for me, so that I could do well for myself. They encourage you to manage your own time well and take responsibility for your independent study which is great preparation for university. I have enjoyed every minute of my time at College so far, I have been inspired by the College to study medicine at university so that I can become a Doctor.

SAJITH DASANAYAKA

Previously: Educated Overseas
Currently studying: A Level Biology, Chemistry & Maths

STUDENTS WITH LEARNING DIFFICULTIES OR DISABILITIES

We are dedicated to ensuring every student has equal access to the courses and services we offer and will make every effort to ensure we meet your needs. You will have the opportunity to meet with our Learning Support Co-ordinator and, where possible, you will be offered time with one of our Learning Support Assistants.

STUDENTS WITH ADDITIONAL RESPONSIBILITIES

We know some students have additional responsibilities at home, such as caring for other members of the family or being a young parent. Our broad range of courses means we can provide flexibility with a personalised timetable to fit around you.

EQUALITY AND DIVERSITY

We embrace and celebrate the rich variety of cultures that make up our College community through shows, events and performances throughout the year. We are dedicated to ensuring our learning environment is tolerant, understanding and receptive to everybody's needs, regardless of their gender, ethnicity or beliefs.

FINANCIAL HELP

You may be entitled to financial support from our College Bursary Scheme. For more information check our website at www.stokesfc.ac.uk or contact our Student Finance Desk on **01782 848736**.

OVERSEAS STUDENTS

A growing number of overseas students' study at the Sixth Form College. Every application that we receive is considered on its own merits. If you are a non-EU/EEA student and you have proof of your right to reside in the UK, you may be eligible to enrol at the College.

MAKE YOUR MARK

WITH DEDICATED STUDENT SUPPORT AND PERSONALISED ADVICE AND GUIDANCE.



A FEW WORDS TO PARENTS

A CARING COMMUNITY DELIVERING EXCELLENCE & INSPIRING FUTURES

As a specialist 16–19 institution we provide students with a bridge between school and the world of employment or university.

A vital part of the College experience is for students to develop the maturity for self-discipline. We set challenges and targets to encourage them to take responsibility for their own progress.

Students will find they have more freedom than they have experienced at school. However, there is a clear expectation for them to achieve academic qualifications and to develop the essential social and employability skills needed to reach their full potential.

All students meet regularly with a Progress Coach who will support and guide them throughout their studies whilst monitoring progress and attendance. To help students excel, one-to-one subject specific support from teaching staff is available throughout the year.

OUR STUDENTS WILL

- Attend all of their lessons and tutorials and additional support sessions.
- Complete their work on time, with support from teaching staff and their Progress Coach.
- Develop the independent study skills necessary for success in level 3 courses and beyond.
- Accept advice and support when offered.
- Respect the College’s commitment to equality and celebration of diversity.
- Develop our Stoke6th Graduate Attributes to become inquisitive, independent learners, with the ability to prioritise their own workload.

KEEPING YOU INFORMED

We believe parental support is important in helping young learners to achieve. You will be invited to course discussions at the start of each year and termly Parents’ Evenings.

Our parent portal gives you online access to your son/daughter’s progress. It includes: their online timetable, attendance and punctuality information, performance against targets, and aims set by your son/daughter’s teachers and Progress Coach.



The Sixth Form College has been an excellent learning provider and has helped my child flourish. The College’s ethos and values create a very welcoming and nurturing environment for students. All staff take the time to get to know the students on an individual basis and provide the best environment for them to grow. Through engaging lessons, one-to-one support, careers advice and work experience I have seen my child develop in both confidence and ability. I would recommend studying at the Sixth Form College to anyone.

MICHELLE CORNE
Parent



THE POTTERIES EDUCATIONAL TRUST

Following conversion to academy status in 2017, the Potteries Educational Trust (PET), created by the Sixth Form College, is the organisation overseeing the activity of the Sixth Form College and all other organisations within the Trust.

The Sixth Form College continues to have its own governing body, and to function as the Sixth Form College serving Stoke on Trent and the surrounding area, while the PET board of trustees have overall accountability, including corporate governance arrangements.

The Trust mirrors the Sixth Form College mission of ‘a caring community delivering excellence and inspiring futures.’

Like the Sixth Form College, the PET receives its funding direct from central government, with the additional benefit of financial savings that can be invested in the education of every young person within the Trust.

As a Multi Academy Trust, education providers across Stoke on Trent and the surrounding area can join the Potteries Educational Trust, and through working together achieve even stronger learning outcomes for all our young people.

As a learning community with common values, the family of institutions which make up the PET share our resources, expertise and best practise in teaching, learning and assessment to deliver a first class education to young people across Stoke On Trent, North Staffordshire and beyond.

For more information, visit the Potteries Educational Trust website www.potteries.ac.uk

KEY VALUES OF THE TRUST

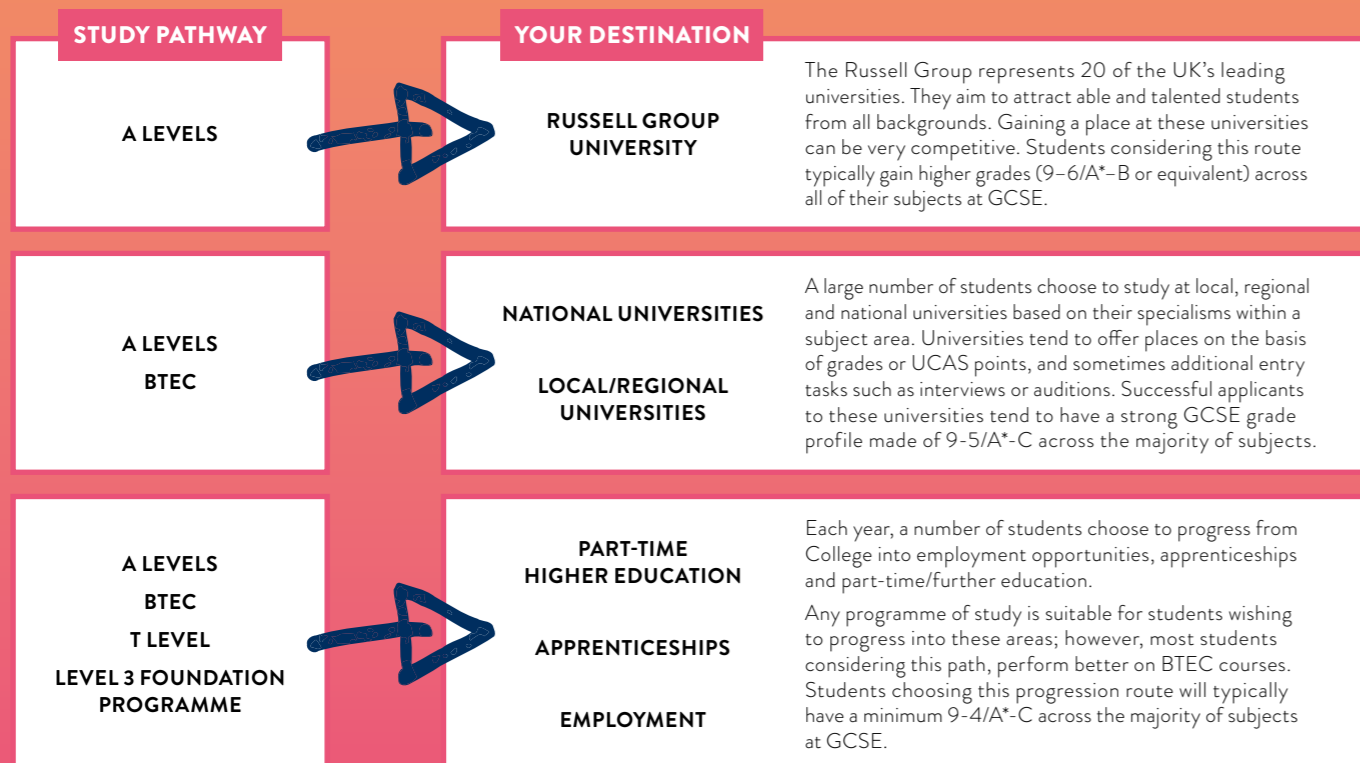
- We strive for excellence in both academic achievement and life experiences to provide a rich education beyond just a set of qualifications.
- We seek to inspire our young people, raising their aspirations to be the best they can be and to make a positive contribution to our local and national community.
- We believe in the added value of working partnerships across all phases of education and the benefits it brings to our students.
- We maintain an open access policy ensuring that admission is not based on academic success, within the context of the available curriculum in each institution.
- The Trust promotes a broad, holistic education for all our children and young people which seeks to broaden their understanding of the world.
- All partners in the PET have an equal place and work together with honesty, transparency and fairness. We will learn from each other and value to our practices and to the children and young people and communities we serve.

KEY BENEFITS TO STUDENTS

- Our collaborative working with a wide range of local and national businesses and universities allow our young people to benefit from extensive facilities, expertise and curriculum choices.
- Students benefit from exciting new curriculum projects, work experience, leadership, mentoring and enrichment opportunities such as additional trips and visits in this country and abroad.
- Our specialist curriculum and Futures Programme develop the employability skills and aspirations of young people across the Trust and the city.
- Savings generated by the Sixth Form College no longer needing to pay VAT on some goods and services are invested back into teaching and learning.
- Increased opportunities for staff to become involved in research, professional development, peer networking and share good practise to deliver outstanding teaching and learning.

CHOOSING YOUR COURSE

With more than 60 courses available, it's really important to choose the right courses for you that best support and enhance your university and career choices after College. To help enrol on a course combination that is suitable for your individual goals, staff at the College will advise and support you at every stage of your application.



NATIONAL REFORMS

Since 2015 the Government has implemented changes to the education sector. The aim of these changes is to better equip students with the qualifications and skills needed to compete with the best in the world.

A LEVEL

All A Level subjects are now linear. This means they are examined at the end of two years of study. The new linear AS qualification no longer counts towards an overall A Level grade. A Level subjects are now two year commitments; as a result, it is important that you choose the right courses for you.

GCSE

GCSE qualifications have undergone reform and are now assessed by external exam only (except where non-exam assessment is the only way to provide valid assessment of the skills required).

Grading GCSEs has also changed from the traditional A*-G to Grade 1-9, with 9 being the highest grade students can achieve.

These changes are designed to engage and enthuse students whilst better preparing you for the demands of employment and further study. They will give students, parents, teachers, universities and employers greater confidence in the integrity and reliability of our qualifications system.

CONTINUED REFORMS

The Government has introduced changes to BTEC and CTEC courses adding examinations alongside course work. In addition, a new qualification, the T Level, will commence from 2020.

BTEC/CTEC

Following significant employer and higher education involvement, BTEC qualifications now include up to 50% external assessment. This could be in the form of examinations or externally set and marked coursework. These changes aim to prepare students for the reality of lifelong learning within the workplace.

T LEVEL

T Levels are new courses which will be offered in September 2020. T Levels will run across a two year period and will be equivalent to three A Levels. The new T levels will combine classroom theory, practical learning and an industry placement with an employer to make sure you have real workplace experience.

These new courses have been developed by employers and businesses so that the content you cover will meet the needs of industry, provide you with the knowledge and experience for highly skilled employment after college.



HOW WILL THESE CHANGES AFFECT ME?

The Sixth Form College has 50 years' experience of supporting students through national reforms in education. The College has taken significant steps to ensure our students receive the best possible advice and guidance. For more information come along to one of our Open Events.

FIND OUT MORE

VISIT OUR OPEN EVENTS

Wednesday 9th October 2019

Thursday 7th November 2019

Tuesday 3rd December 2019

Thursday 19th March 2020

All Open Events take place from 5pm - 7pm

PROGRAMME OF STUDY

The Sixth Form College provides outstanding support to enable you to progress with your career; we are committed to making sure you start on the right course combination for you.

As a student of the Sixth Form College you will experience a holistic and stimulating curriculum. As well as your courses, you will receive a comprehensive programme of study designed to support and complement your education.

MAKE YOUR MARK

VISIT THE FUTURES ZONE TO DISCUSS YOUR CAREER WITH OUR CAREERS PROGRESSION TEAM.



PERSONAL DEVELOPMENT

Develop skills in communication, information technology and numeracy. Every course at the College will encourage you to develop these vital skills both inside and outside of the classroom.

PROGRESS COACH

Each term you will spend one-to-one time with your personal Progress Coach to discuss your overall progress in College. Each meeting will also focus on your attendance and future plans. Alongside your one-to-one sessions, you will also receive a weekly tutorial session delivered by your Progress Coach where you will develop your employability skills as well as receive ongoing support to make sure you achieve your potential.

STUDY SUPPORT WORKSHOPS

You will be invited to a range of subject-specific sessions to develop your understanding and confidence beyond the classroom in turn, helping to support you to achieve the grades you are capable of.

REGULAR ASSESSMENT

Six times a year, your subject teachers will formally review your progress via summative assessments. Together you will then agree targets to give you a clear plan of action to keep you on track and continuously improving.

VIRTUAL LEARNING

Learning is no longer confined to the classroom and can take place, anytime, anywhere. Through MySFC and Google Classroom, the College's virtual learning environments, you can continue your studies whether in or out of College.

WORK EXPERIENCE

Work experience is highly valued by employers, universities and further education providers as it develops valuable skills and qualities. In partnership with local businesses, you will be required to undertake work experience as part of your Sixth Form College journey. The work experience should be relevant to your chosen career path to help encourage your personal development and life experiences. We will support and encourage you throughout to ensure that you get the most out of your placement.

ACADEMIC ENRICHMENT

Each term the College organises a large number of subject-based visits. Last year we delivered over 140 of these academic trips in many subject areas including: a Public Services visit to Snowdonia, a Geology trip to Ecton Mine and a Law visit to local law courts. In addition our students also have the opportunity to take part in international visits. So far this has included trips to Washington, D.C. and Paris.

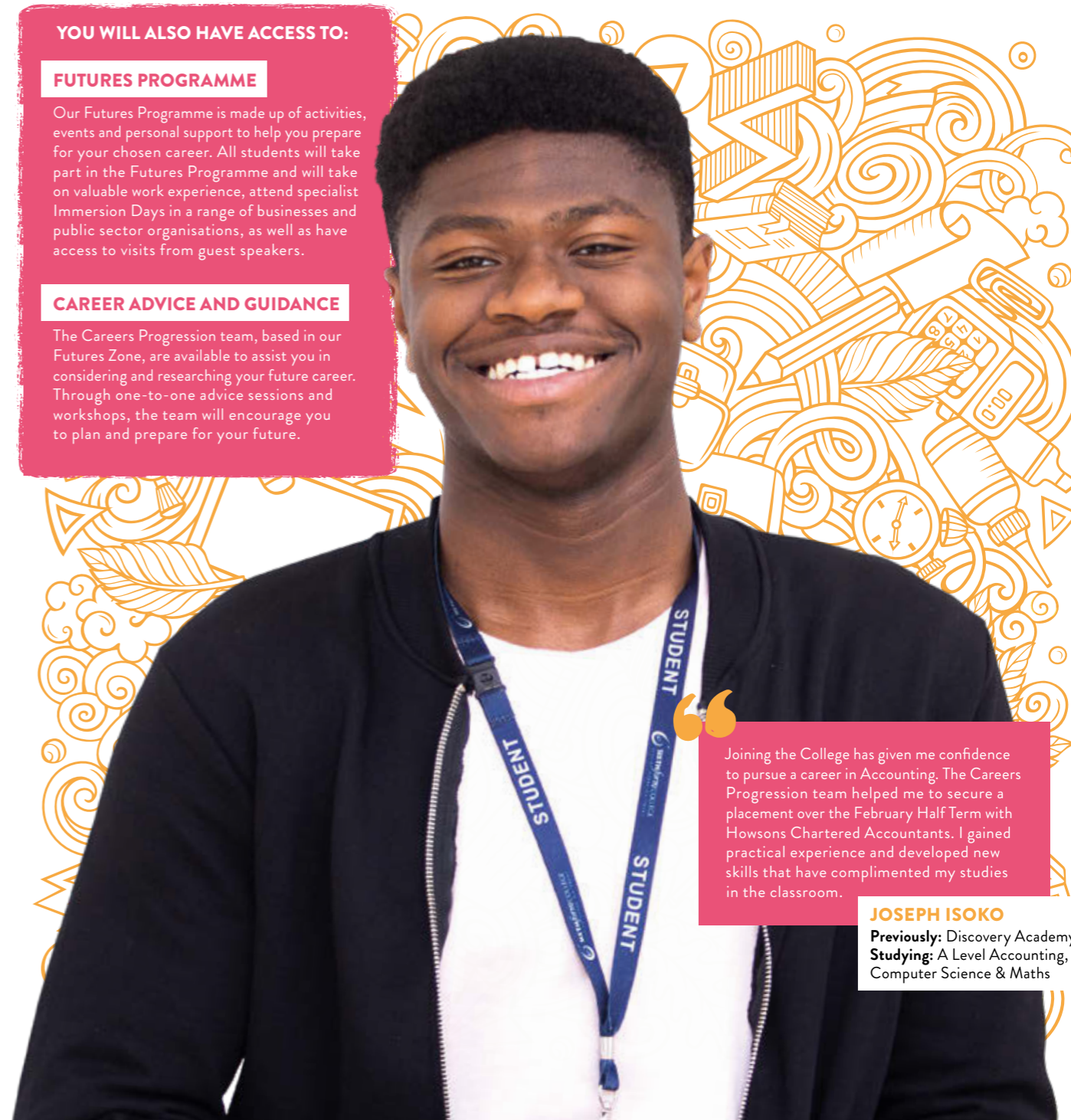
YOU WILL ALSO HAVE ACCESS TO:

FUTURES PROGRAMME

Our Futures Programme is made up of activities, events and personal support to help you prepare for your chosen career. All students will take part in the Futures Programme and will take on valuable work experience, attend specialist Immersion Days in a range of businesses and public sector organisations, as well as have access to visits from guest speakers.

CAREER ADVICE AND GUIDANCE

The Careers Progression team, based in our Futures Zone, are available to assist you in considering and researching your future career. Through one-to-one advice sessions and workshops, the team will encourage you to plan and prepare for your future.



“Joining the College has given me confidence to pursue a career in Accounting. The Careers Progression team helped me to secure a placement over the February Half Term with Howsons Chartered Accountants. I gained practical experience and developed new skills that have complimented my studies in the classroom.”

JOSEPH ISOKO

Previously: Discovery Academy
Studying: A Level Accounting, Computer Science & Maths

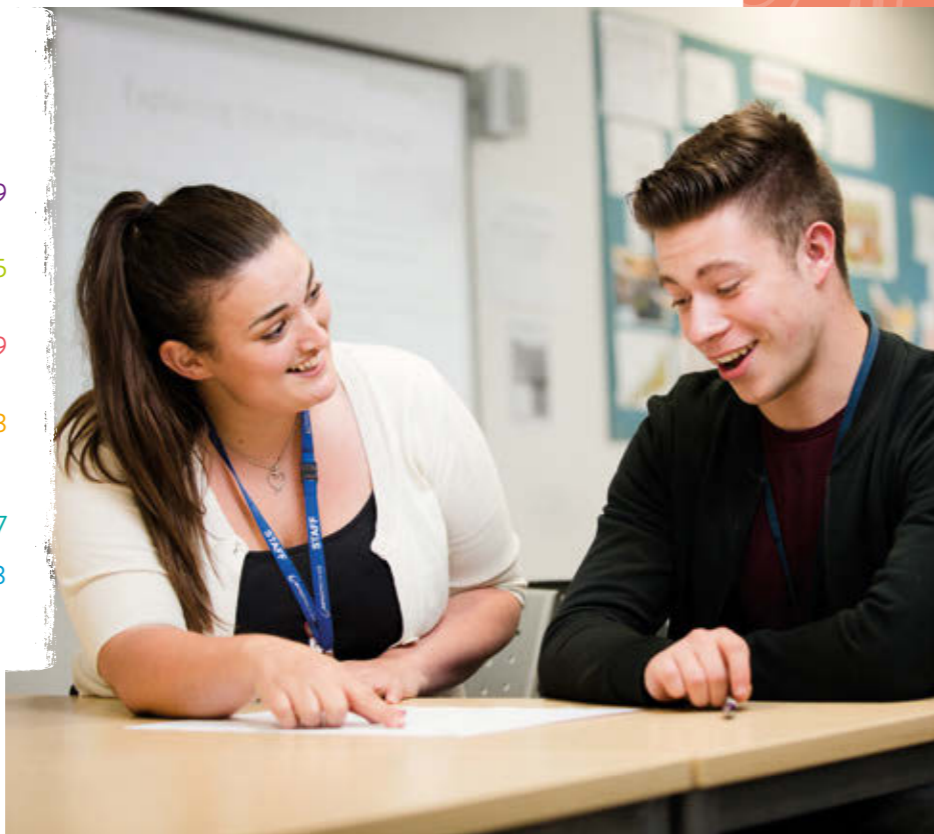
OUR COURSES

To help you find a course combination that works for you, our courses are organised into Progression Pathways. Reflecting career areas, our pathways show which courses typically work well together. However, don't feel restricted, at the Sixth Form College you can study any course in any combination. Choosing from over 60 courses, you'll pick a unique programme of study. A Levels, BTECS, or a mixture of both, we'll help you to find a course combination that works for you and your future.

MAKE YOUR MARK

WITH ONE OF OUR SIX PROGRESSION PATHWAYS.

- **BUSINESS, FINANCE & LAW** 26-29
- **CREATIVE & PERFORMING ARTS** 30-35
- **EDUCATION, SOCIETY & HEALTH** 36-39
- **HUMANITIES, LANGUAGES & LITERATURE** 40-43
- **SPORTS & LEISURE** 44-47
- **STEM** 48-53
SCIENCE, TECHNOLOGY, ENGINEERING & MATHS



MAKE YOUR MARK WITH ANY COURSE IN ANY COMBINATION

A LEVEL/LEVEL 3

- ACCOUNTING
- ART & DESIGN
- BIOLOGY
- BUSINESS STUDIES
- CHEMISTRY
- CLASSICAL CIVILISATION
- COMPUTER SCIENCE
- DANCE
- ECONOMICS
- ENGLISH LANGUAGE
- ENGLISH LITERATURE
- ENVIRONMENTAL SCIENCE
- FRENCH
- FURTHER MATHEMATICS
- GEOGRAPHY
- GEOLOGY
- GERMAN
- HISTORY
- LAW
- MATHEMATICS
- MEDIA STUDIES
- MUSIC
- PHILOSOPHY
- PHOTOGRAPHY
- PSYCHOLOGY
- PHYSICAL EDUCATION
- PHYSICS
- POLITICS

- RELIGIOUS STUDIES
- SOCIOLOGY
- SPANISH
- STATISTICS
- 3D DESIGN - PRODUCT DESIGN & ARCHITECTURE
- 3D DESIGN - TEXTILES, JEWELLERY & FASHION

BTEC/VOCATIONAL/LEVEL 3

- APPLIED HUMAN BIOLOGY
- APPLIED PSYCHOLOGY
- APPLIED SCIENCE
- BUSINESS
- CRIMINOLOGY
- COMPUTING
- DANCE (CONTEMPORARY)
- DIGITAL GAMES DESIGN & DEVELOPMENT
- DIGITAL MUSIC PRODUCTION
- GRAPHIC DESIGN
- HEALTH & SOCIAL CARE
- LAW
- LIBF DIPLOMA IN FINANCIAL EDUCATION
- MUSIC PERFORMANCE
- MUSICAL THEATRE
- PUBLIC SERVICES
- SPORT

- SPORT & EXERCISE SCIENCE
- THEATRE
- TV & FILM PRODUCTION

T LEVEL/LEVEL 3

- DIGITAL PRODUCTION, DESIGN & DEVELOPMENT



LEVEL 3 FOUNDATION PROGRAMME

- CAMBRIDGE NATIONAL CERTIFICATE IN CREATIVE IMEDIA
- CTEC HEALTH & SOCIAL CARE
- GCSE ART & DESIGN
- GCSE CLASSICAL CIVILISATION
- GCSE COMBINED SCIENCE
- GCSE ENGLISH LANGUAGE
- GCSE MATHEMATICS
- GCSE MEDIA
- LIBF CERTIFICATE IN FINANCIAL EDUCATION
- YMCA CERTIFICATE - FITNESS INSTRUCTING



The College has provided so many opportunities for me so far to help explore my interests and develop the life skills I will need to excel in the future. Studying Law has pushed my way of thinking, understanding the legal system and studying criminal law has really inspired me to pursue a career within in the police force.

MATT MOREY
 Previously: St Peter's Academy
 Currently studying: A Level History, Law & Physical Education

MAKE YOUR MARK

WITH A CAREER IN

BUSINESS, FINANCE & LAW

BUSINESS, FINANCE & LAW

DEVELOP & SUCCEED

Discover how entrepreneurs come up with winning business ideas, why supply and demand affect the prices we pay, what it takes to set up and run a company and keep it profitable and who decides the laws we live by.

Whether you want to be the next Mark Zuckerberg or Richard Branson, defend someone in a court case or work in an international bank or accountancy firm, this broad Progression Pathway will help you to understand some of the driving forces behind our ever-changing world.

With opportunities to take part in national competitions, work with experts in their professional environment, receive mentoring

from specialists in their field and attend talks from guest speakers and universities, we can help you develop your CV and entrepreneurial skills so that you're ready for life in the world of commerce.

With topics including criminal law, marketing, events management, finance, book-keeping, British Politics and strategic thinking, combined with a structured programme of activities and personal support, we will provide you with the opportunities you need to develop your skills and reach your full potential within your chosen career.

For more information on these subjects visit www.stokesfc.ac.uk



100%
 PASS RATE FOR A LEVEL
 BUSINESS & ECONOMICS

COURSES

A LEVEL/LEVEL 3

- Accounting
- Business Studies
- Economics
- Law
- Politics

BTEC/VOCATIONAL/LEVEL 3

- Business
- Law
- Criminology
- LIBF Diploma in Financial Education

A LEVEL ACCOUNTING

Assessed: Exam – 100%

Topics Include: You will use financial data such as wages, sales, and purchases in order to find out:

- If a Business Is Making a Profit or a Loss
- The Number of Sales a Business Needs to Make in Order to Survive
- Understanding the Cost of a Product and Its Profit Margins
- The Results of Business Decisions

Awarding Body: AQA

Duration: 2 years

Career progression: Students often progress onto Higher Education routes once finishing this course. There are a variety of career routes available in finance and accountancy ranging from a book keeper to a financial advisor.

A LEVEL ECONOMICS

Assessed: Exam – 100%

Topics Include:

- Microeconomics
- Macroeconomics
- International Trade
- Development Economics

Awarding Body: Pearson Edexcel

Duration: 2 years

Career Progression: Many students progress to university to study economics and business related degrees which will support a career in a graduate management role in industries such as: banking and finance, accountancy and public policy.

A LEVEL LAW

Assessed: Exam – 100%

Topics Include:

- Criminal Courts and Lay People
- Criminal Law
- Human Rights Law
- Law and Justice

Awarding Body: OCR

Duration: 2 years

Career Progression: A large number of our students progress onto Law Degrees both LLB and combined honours programmes at local and national universities as well as degrees in Criminology, Criminal Justice and Forensic Science. Law students are also able to access Legal apprenticeships and many of our former students have now graduated and work in the industry as lawyers in small and large commercial practices.

BTEC DIPLOMA BUSINESS

A Level Equivalent: 2 A Level

Assessed: Combination of Examination, External Assessment and Coursework.

Topics Include:

- Developing a Marketing Campaign
- Personal and Business Finance
- Recruitment and Selection
- Investigating Customer Service

Awarding Body: Pearson Edexcel

Duration: 2 years

Career Progression: You can progress onto business related degrees at well-respected universities and potential career paths include junior management in a wide range of industries as well as careers related to Sales and Marketing, Retail, Logistics and Operations Management.

BTEC EXTENDED CERTIFICATE LAW

A Level Equivalent: 1 A level

Assessed: Coursework – 50%, External Assessment – 50%

Topics Include:

- Dispute Solving in Civil Law
- Investigating Aspects of Criminal Law and the Legal System
- Applying the Law
- Aspects of Family Law

Awarding Body: Pearson Edexcel

Duration: 2 years

Career Progression: Students who study BTEC Law progress to higher education to study law, criminology, business and forensic science. Legal apprenticeships are also becoming a more popular route into the legal profession for students.

WJEC DIPLOMA CRIMINOLOGY

A Level Equivalent: 1 A Level

Assessed: A Level Equivalent:

Assessed: External Assessment – 50%, Internal Assessment – 50%

Topics Include:

- Changing Awareness of Crime
- Criminological Theories
- Crime Scene to Courtroom
- Crime and Punishment

Awarding Body: WJEC

Duration: 2 years

Career Progression: An understanding of criminology is relevant to many job roles within the criminal justice sector, social and probation work and sociology and psychology.

MAKE YOUR MARK

FOUND A COURSE THAT INTERESTS YOU? SHOW THAT YOU MEAN BUSINESS – CIRCLE IT!

A LEVEL BUSINESS STUDIES

Assessed: Exam – 100%

Topics Include:

- Marketing
- Finance
- Operations Management
- Human Resources

Awarding Body: Pearson Edexcel

Duration: 2 years

Career Progression: This course often leads to progress to higher education courses and apprenticeships in Business related disciplines. There are a variety of career routes which include Marketing, Finance, Human Resources from small enterprises to large multinational organisations.

A LEVEL POLITICS

Assessed: Exam – 100%

Topics Include:

- Use of Referendums in the UK
- The Use of Direct Action by Pressure Groups
- Is the Prime Minister Too Powerful?
- What Were the Main Reasons for the Result in the Us Presidential Election?

Awarding Body: Pearson Edexcel

Duration: 2 years

Career Progression: The vast majority of our Politics students progress onto university and many take related degrees: Government, International Relations or Public Administration. This subject is particularly useful if you are looking for a career in Law, Civil Service, Local Government or the Police.



LIBF DIPLOMA FINANCIAL EDUCATION

A Level Equivalent: 1 A Level

Assessed: Each year you will be assessed on two units through a combination of Multiple Choice Questions and a written paper.

Topics Include:

- Financial Capability for the Immediate and Short Term
- Financial Capability for the Medium and Long Term
- Sustainability of an Individuals Finances
- Sustainability of the Financial Services System

Awarding Body: London Institute of Banking and Finance

Duration: 2 years

Career Progression: You will develop a strong grounding for undergraduate study within finance and business-related disciplines, with many students going on to study accounting, business, finance and banking.



“

There is such a strong support network at the College which encourages you to embrace and overcome all sorts of challenges. I have had opportunities to deliver Graphic Design presentations to large companies such as McCann as well as working with local railway networks to design a Trainline for North Staffordshire. It was a great opportunity to experience what it is like to work with a real client and has prepared me to study Graphic Design at University.

KRISHNELLE ABANO

Previously: St Margaret Ward Catholic Academy

Currently studying: A Level Photography & BTEC Graphic Design

MAKE YOUR MARK

WITH A CAREER IN

CREATIVE & PERFORMING ARTS

CREATIVE & PERFORMING ARTS

EXPLORE YOUR IMAGINATION

100%
DISTINCTION*/DISTINCTION
IN BTEC DANCE
(CONTEMPORARY)

Do you dream of producing your own fashion line, creating choreography for a West End musical, performing in front of a sold out audience, directing your own feature film or designing a blockbuster video game? Use your passion and talent to take the first step towards a rewarding career in one of the UK's fastest growing sectors.

This exciting Progression Pathway will challenge you to explore your imagination through different means of expression, with topics including fine art, textiles, photojournalism, producing and editing techniques, music theory and practical projects.

You will build a strong portfolio through work based projects and placements, with design briefs from professional companies which have included Ikea, Jaguar Land Rover, Michelin, Creative Boom and East Midlands Trains.

With state-of-the-art facilities including two drama studios, a spacious dance studio, music recording and rehearsal spaces, media suite and art workshops, as a Creative and Performing Arts student you will be supported in enhancing your artistic skills.

From choreographing routines with local schools, hosting concerts in the community, performing at College events and working on graphic design and photography projects with local businesses, you are guaranteed a professional preparation for a career in the creative industry.

For more information on these subjects visit www.stokesfc.ac.uk

COURSES

A LEVEL/LEVEL 3

- Art & Design
- Dance
- Media Studies
- Music
- Photography
- 3D Design - Product Design & Architecture
- 3D Design - Textiles, Jewellery & Fashion

BTEC/LEVEL 3

- Dance (Contemporary)
- Digital Games Design & Development
- Digital Music Production
- Graphic Design
- Music Performance
- Musical Theatre
- Theatre
- TV & Film Production



A LEVEL ART & DESIGN

Assessed: Externally Set Assignment – 40%, Coursework – 60%

- Topics Include:**
- Drawing Skills
 - Painting
 - Printmaking
 - Visual Communication

Awarding Body: AQA

Duration: 2 years

Career Progression: Successful completion of the course is an excellent platform for progression to a Foundation Course or University degree in Art and Design, and an essential step towards a career in a whole range of specialist areas including; Graphics, Fine Art, Illustration, Jewellery, Printmaking, Textiles/Surface Pattern, Photography, Fashion, Interior Design, Ceramic Design, Product Design, Crafts, Animation, Architecture and many others.

A LEVEL DANCE

Assessed: Exams – 50%, Practical Assessment – 50%

- Topics Include:**
- Dance Performance
 - Choreography
 - Dance Technique
 - Analysis of Professional Dance Works

Awarding Body: AQA

Duration: 2 years

Career Progression: A Level Dance is suitable for anyone wanting to pursue the arts or dance in higher education and who wants to become a 'thinking dancer'. It will support any future course requiring good communication and group work skills. Careers include: performing, teaching, supporting professions, choreography.

A LEVEL MEDIA STUDIES

Assessed: Exam – 70%, Coursework – 30%

- Topics Include:**
- Media Products, Industries and Audiences
 - Media Forms and Products in Depth
 - Cross-Media Production

Awarding Body: Eduqas

Duration: 2 years

Career Progression: The range of skills required within Media Studies is recognised by both employers and universities as adaptable for a variety of courses and occupations. The media industry employs a wide range of people: editors, journalists, engineers and researchers. Within TV you can work in front of and behind the camera as camera operators, editors and production assistants.

A LEVEL MUSIC

Assessed: Exam – 40%, Performance – 35%, Composition – 25%

- Topics Include:**
- Orchestral Music
 - Harmony
 - Composition
 - Debussy, Poulenc, Haydn, and Musical Theatre

Awarding Body: Eduqas

Duration: 2 years

Career Progression: Many students that study Music at College decide to continue their studies at university or Music College although some go straight into the Music industry after Sixth Form.

A LEVEL PHOTOGRAPHY

Assessed: Externally Set Assignment – 40%, Coursework – 60%

- Topics Include:**
- Studio Practice
 - Alternative Approaches to Photography
 - DSLR Technical Skills
 - History and Critical Thinking

Awarding Body: AQA

Duration: 2 years

Career Progression: This course allows students to apply for a variety of Higher Education courses including Foundation Degrees, HNDs and BA degrees in Art, Design and different areas of Photography. Courses such as Documentary Photography, Photographic Art, Fashion Photography, Fine Art, Art Practice, Graphic Design, Animation, Media Studies, Multimedia and Lens Based Media, Film and Television.

A LEVEL 3D DESIGN – PRODUCT DESIGN & ARCHITECTURE

Assessed: Coursework 100% (40% Externally Set Assignment)

- Topics Include:**
- Design, Environment and Ergonomics
 - Design and Manufacture
 - Design and Market Influence
 - Different Styles and Genres

Awarding Body: AQA

Duration: 2 years

Career Progression: This course can lead to many university options and career paths including: product design, industrial design, automotive design, engineering, furniture design, structural engineering, architecture, ergonomic design and interior design.

A LEVEL 3D DESIGN – TEXTILES, JEWELLERY & FASHION

Assessed: Coursework 100% (40% Externally set assignment)

- Topics Include:**
- Design for Different Applications and Users
 - Design for Sustainability
 - Design and Market Influence
 - Different Styles and Genres

Awarding Body: AQA

Duration: 2 years

Career Progression: There is an exciting future ahead of you studying this course. This can lead to many university options and career paths including: fashion/textile design, surface pattern design, interior design, jewellery design and becoming a blacksmith or silversmith.

BTEC EXTENDED CERTIFICATE DANCE (CONTEMPORARY)

A Level Equivalent: 1 A Level

Assessed: Practical Assessment – 100%

- Topics Include:**
- Detailed Knowledge of Contemporary Dance Styles
 - Development of Technical and Expressive Contemporary Dance Skills
 - Historical and Intercultural Understanding of the Evolution of Contemporary Dance
 - Detailed Knowledge of Choreography Through a Range of Approaches

Awarding Body: Pearson Edexcel

Duration: 1 year

Career Progression: This course is suitable for anyone wanting to pursue the arts or dance in Higher Education, or as support for any future course requiring good communication and group work skills. Former students have gone onto study at Northern School of Contemporary Dance, London Studio Centre, Urdang and Bird College of Dance.

BTEC DIPLOMA DIGITAL GAMES DESIGN & DEVELOPMENT

A Level Equivalent: 2 A Level

Assessed: Controlled Assessment – 20%, Coursework – 80%

- Topics Include:**
- Concept Art for Computer Games
 - 2D Animation
 - Game Engine Scripting
 - 3D Environments

Awarding Body: Pearson Edexcel

Duration: 2 years

Career Progression: You can progress from this course directly to university, onto a Level 4 Apprenticeship or employment. This course will develop the essential skills needed for study at a higher level but also the skills needed on a diverse range of courses, including Games Design, Game Development, Web Design, Graphics and 3D Animation.



MAKE YOUR MARK

GET CREATIVE: CIRCLE, UNDERLINE, HIGHLIGHT. MAKE YOUR COURSES STAND OUT.





BTEC EXTENDED CERTIFICATE DIGITAL MUSIC PRODUCTION

A Level Equivalent: 1 A Level

Assessed: Coursework – 100%

Topics Include:

- Sound Creation and Manipulation
- Music Production Techniques
- Sequencing Systems and Techniques
- Music and Sound for Moving Image

Awarding Body: Pearson Edexcel

Duration: 2 years

Career Progression: This course can lead towards a choice of two pathways, either towards further study at university or to a career in the music industry.

BTEC DIPLOMA GRAPHIC DESIGN

A Level Equivalent: 2 A level

Assessed: Coursework – 100%

Topics Include:

- Branding in Graphic Design
- Graphic Illustration
- Graphics for 3D Packaging
- Managing a Client Brief

Awarding Body: Pearson Edexcel

Duration: 2 years

Career Progression: You can progress to careers in the graphic design industry such as Advertising, Editorial Design, Packaging Design, Photography, Corporate Design or Illustration.

BTEC EXTENDED CERTIFICATE MUSIC PERFORMANCE

A Level Equivalent: 1 A Level

Assessed: Practical assessment – 100%

Topics Include:

- Band Rehearsals
- Solo Performance
- Session Styles
- Planning a Concert

Awarding Body: Pearson Edexcel

Duration: 2 years

Career Progression: This course can lead towards a choice of two pathways, either towards further study at university or to a career in the industry working as a musician. Students have gone onto study at Music College or at well-known universities.

BTEC EXTENDED CERTIFICATE MUSICAL THEATRE

A Level Equivalent: 1 A level

Assessed: Practical assessment – 100%

Topics Include:

- Singing Skills for Dancers and Actors
- Dance Technique and Choreography
- Creating and Performing
- Learning How to Prepare for Auditions

Awarding Body: Pearson Edexcel

Duration: 2 years

Career Progression: This course is an excellent introduction to a wide range of progression routes such as technical theatre; event management; marketing; directing; writing and stage management.

BTEC EXTENDED CERTIFICATE THEATRE

A Level Equivalent: 1 A Level

Assessed: Practical assessment – 100%

Topics Include:

- Developing Skills and Techniques for Live Performance
- Group Performance Workshop
- Acting Styles
- Interpreting Classical Text for Performance

Awarding Body: Pearson Edexcel

Duration: 2 years

Career Progression: You will develop the key skills and confidence you need to go onto a range of performing arts disciplines either at Higher Education level or the world of work.



BTEC DIPLOMA TV & FILM PRODUCTION

A Level Equivalent: 2 A Level

Assessed: Controlled Assessment – 20%, Coursework – 80%

Topics Include:

- Single Camera Techniques
- Video Editing Techniques
- Stop Frame Animation
- Script Writing

Awarding Body: Pearson Edexcel

Duration: 2 years

Career Progression: You can progress from this course directly to university, onto a Level 4 Apprenticeship or employment. This course will develop the essential skills needed for study at a higher level but also the skills needed on a diverse range of courses including Film Studies, Film and TV Production, Media Production, Advertising, Marketing and Communications.



“Being able to experience a balance of curricular and extra-curricular activities has really improved my time management skills and how I balance my workload. The Education, Society & Health Pathway encourages you to adopt a university-like learning style, prompting a higher level of accountability for your own work. This is helping to prepare me for life after College as I want to study a Degree in Psychology and hopefully pursue Clinical Psychology as a career.

ALFIE BROOKES
 Previously: Excel Academy
 Currently studying: A Level English Language, Physical Education & Psychology

MAKE YOUR MARK
WITH A CAREER IN
EDUCATION, SOCIETY & HEALTH

EDUCATION, SOCIETY & HEALTH

EXCEL IN YOUR EDUCATION

This Progression Pathway is all about people – what motivates us, why we act in a certain way, how we relate and communicate with each other and ultimately what makes us tick!

You can discover how the human mind works, why modern society functions as it does or how our shared human experiences differ from culture to culture. This Pathway also provides a strong practical focus for those interested in a career in the public sector, which includes real work experience in care homes, schools, hospitals and health care services and charities. As a member of this Pathway you will develop essential skills to help you succeed in today's diverse society.

With an exciting programme of guest speakers, visits and work experience you will learn in a fun, engaging environment which will prepare you for a broad range of careers from teaching to nursing, social work, speech therapy or service within the fire, police or armed forces.

If you want to develop your teamwork, problem solving, or communication skills, this Pathway will allow you to adapt and thrive in what can be a challenging but rewarding sector.

For more information on these subjects visit www.stokesfc.ac.uk



ALMOST
1/2
 OF A LEVEL SOCIAL SCIENCES STUDENTS
 ACHIEVED HIGH GRADES OF A*-B



- COURSES**
- A LEVEL/LEVEL 3**
- Environmental Sciences
 - Geography
 - Geology
 - Psychology
 - Sociology
- BTEC/CTEC/LEVEL 3**
- Applied Psychology
 - Health & Social Care
 - Public Services

A LEVEL ENVIRONMENTAL SCIENCE

Assessed: Exam – 100%

Topics Include:

- Pollution
- The Living Environment
- Energy Resources
- Biological Resources

Awarding Body: AQA

Duration: 2 years

Career Progression: Degree level environmental science enables students to tackle many of the world's major environmental problems, including climate change and pollution. Graduates work in agriculture, law, pollution control, ecology and more.

A LEVEL GEOGRAPHY

Assessed: Exam – 80%, Coursework – 20%

Topics Include:

- Changing Landscapes
- Tectonic Hazards
- Economic Growth and Challenge
- Energy Dilemmas

Awarding Body: Eduqas

Duration: 2 years

Career Progression: For students wishing to extend their geographical education to a higher level, universities offer a range of courses in Geography, Geology, Environmental Science and Sustainability.

A LEVEL GEOLOGY

Assessed: Exam – 100% + Practical Endorsement

Topics Include:

- Development of Practical Skills in Geology
- Foundations in Geology
- Global Tectonics
- Interpreting the Past

Awarding Body: OCR

Duration: 2 years

Career Progression: Around half of all UK Earth Science undergraduates studied Geology A level and it is also an accepted science qualification for progression to other science courses including marine science, archaeology and civil engineering.

A LEVEL SOCIOLOGY

Assessed: Exam – 100%

Topics Include:

- Research Methods
- Families and Households
- Crime and Deviance
- Beliefs in Society

Awarding Body: AQA

Duration: 2 years

Career Progression: Students can progress directly on to degrees in Sociology, Psychology or Criminology. Sociology is also beneficial for degrees in Law, History, Politics or Social Work.

BTEC DIPLOMA PUBLIC SERVICES

A Level Equivalent: 2 A level

Assessed: Coursework – 100%

Topics Include:

- Understanding Discipline
- Fitness Testing and Training
- Crime and Its Effects on Society
- Police Powers in the Public Services

Awarding Body: Pearson Edexcel

Duration: 2 years

Career Progression: You can progress either to employment in any of the military or civic uniformed public services or to a Higher Education Degree such as Crime, Deviance and Society, Policing and Criminal Investigation or Law (Criminology).

BTEC EXTENDED CERTIFICATE APPLIED PSYCHOLOGY

A Level Equivalent: 1 A Level

Assessed: External Assessment – 58%, Internal Assessment – 42%

Topics Include:

- Psychological Approaches and Applications
- Conducting Psychological Research
- Health Psychology
- Introduction to Psychopathology

Awarding Body: Pearson Edexcel

Duration: 2 years

Career Progression: When combined with other relevant qualifications, you could progress onto degree courses such as Occupational Health, Child Psychology, Sport Psychology.

CTEC EXTENDED CERTIFICATE, DIPLOMA OR EXTENDED DIPLOMA HEALTH & SOCIAL CARE

A Level Equivalent:

- Extended Certificate equivalent: 1 A Level
- Diploma equivalent: 2 A Level
- Extended Diploma equivalent: 3 A Level

Assessed: Exam – 40%, Coursework – 60%

Topics Include:

- Building Positive Professional Relationships
- Equality, Diversity and Rights
- Health, Safety and Security
- Anatomy and Physiology

Awarding Body: OCR

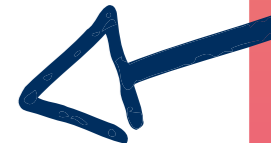
Duration: 2 years

Career Progression: You will develop skills, knowledge and behaviours required to enter employment in the health and social care sector, or to progress in to health or social care related apprenticeships or degree courses, such as Nursing, Midwifery, Social Work, Early Childhood Studies, or a range of other health or social care related degree courses.



MAKE YOUR MARK

**MADE UP YOUR MIND?
MAKE YOUR COURSE
STAND OUT – CIRCLE,
UNDERLINE, HIGHLIGHT.**





Attending Find Your Feet before starting in September really helped the move from School to College as it gave me more of an idea of what to expect. That's when my interest in Philosophy was sparked. The College is a very supportive community, but also pushes you to aim highly and take responsibility for your own achievements through independent study. I've become more confident in my abilities and what I can achieve. That's why I am now aiming to go to a Russell Group University to study Cognitive Neuroscience and Psychology.

EMILIA FURREDDU
 Previously: Corfe Hills School
 Currently studying: A Level Biology, Philosophy & Psychology

**MAKE YOUR MARK
 WITH A CAREER IN
 HUMANITIES, LANGUAGES & LITERATURE**

HUMANITIES, LANGUAGES & LITERATURE

INSPIRE YOUR CREATIVITY

Whether you're thinking of working as a journalist, solicitor, interpreter, author or events organiser, the combination of subjects within this Progression Pathway will ensure you develop your ability to write and form a concise and persuasive argument.

You will build communication, expression and argumentation skills, whether in English or another language. These are skills which will help you in whatever field you pursue, whether it is academia, journalism, the law, languages, writing or beyond. You will develop skills and knowledge which are essential and valued in any field.

Learning won't just take place within the classroom, with regular talks, trips and work experience opportunities; you will develop a range of sought after attributes and amass valuable experiences.

This exciting, varied and thought-provoking Pathway will help to induct you into the study of human behaviour and its self-expression, while also giving you a broad and effective preparation for higher education or employment.

For more information on these subjects visit www.stokesfc.ac.uk



2/3
 OF A LEVEL FRENCH,
 GERMAN AND SPANISH
 STUDENTS ACHIEVED A*-B

- COURSES**
- A LEVEL/LEVEL 3**
- Classical Civilisation
 - English Language
 - English Literature
 - French
 - German
 - History
 - Philosophy
 - Religious Studies
 - Spanish

A LEVEL CLASSICAL CIVILISATION

Assessed: Exam – 100%

Topics Include:

- Greek Religion
- Homer’s Odyssey and Society
- Imperial Image – Emperor Augustus
- Virgil’s Aeneid

Awarding Body: OCR

Duration: 2 years

Career Progression: Classical Civilisation is highly valued by Universities as it is a challenging, academically rigorous subject and the subject also fosters skills which are valued by employers. Classicists can be found in a range of fields – not just teaching and museum/library work. Other areas include law, administration, the media, industry and politics.

A LEVEL ENGLISH LITERATURE

Assessed: Exam – 80%, Coursework – 20%

Topics Include:

- Shakespeare & Drama and Poetry Pre-1900
- Comparative and Contextual Study
- American Literature 1880–1940
- Non-Exam Assessment/Coursework

Awarding Body: OCR

Duration: 2 years

Career Progression: English Literature is an enabling/facilitating subject. This means, it is respected by Russell Group universities as being a course that will help towards a good degree. Any university subject which requires analytical skills will benefit from a foundation in English Literature.

A LEVEL GERMAN

Assessed: Exam – 100%

Topics Include:

- Cultural Difference and Celebrating Difference
- Discrimination and Diversity
- Initial and Subsequent Process of Reunification
- Social Cohesion in Modern Germany

Awarding Body: Eduqas

Duration: 2 years

Career Progression: By studying a language, you will keep many academic and vocational pathways open. French can be combined with a variety of subjects at university and many students progress through this route in Higher Education.

A LEVEL PHILOSOPHY

Assessed: Exam – 100%

Topics Include:

- Epistemology (knowledge)
- Moral Philosophy
- Philosophy of Religion
- Philosophy of Mind

Awarding Body: AQA

Duration: 2 years

Career Progression: Good philosophy students find ultimate questions fascinating, enjoy reasoning and arguing about them and are able to communicate their views clearly and concisely. These skills make philosophy graduates very valuable in all forms of employment.

A LEVEL RELIGIOUS STUDIES

Assessed: Exam – 100%

Topics Include:

- Philosophy of Religion
- Ethics
- Developments in Christian Thought

Awarding Body: OCR

Duration: 2 year

Career Progression: Religious Studies is a popular A Level both in College and nationally. It develops skills such as argument analysis, communication and allows students to understand and respect others. A qualification in this subject is valuable in teaching, journalism, medicine and any other area where you come across people and their ideas.

A LEVEL SPANISH

Assessed: Exam – 100%

Topics Include:

- Education and Employment Opportunities
- Regional Culture and Heritage; Media, Art, Film and Music
- Cultural Identity and Marginalization; Migration and Integration
- El Franquismo; Post Civil War Historical and Political Repercussions

Awarding Body: Eduqas

Duration: 2 years

Career Progression: Spanish makes an excellent combination with another language or indeed other subjects at university and many students progress through this route in higher education. Spanish is not just a subject which leads to jobs in translation, interpreting or education since employees with language skills are highly valued in the service and manufacturing sectors of industry.

A LEVEL ENGLISH LANGUAGE

Assessed: Exam – 80%, Non-Examination Assessment – 20%

Topics Include:

- Language, the Individual and Society
- Language Diversity and Change
- Language in Action

Awarding Body: AQA

Duration: 2 years

Career Progression: Studying English Language could lead to a variety of careers within, Journalism, Marketing & Advertising, Speech Therapy, Script Writing and Teaching.

A LEVEL FRENCH

Assessed: Exam – 100%

Topics Include:

- Family and Citizenship
- Youth Trends and Personal Identity
- Education and Employment Opportunities
- France 1940–1950

Awarding Body: Eduqas

Duration: 2 years

Career Progression: By studying a language, you will keep many academic and vocational pathways open. French can be combined with a variety of subjects at university and many students progress through this route in Higher Education.

A LEVEL HISTORY

Assessed: Exam – 80%, Coursework – 20%

Topics Include:

- In Search of the American Dream: the USA, c. 1917–96
- The Road to Independence: India, c. 1914–48
- The British Experience of Warfare: c. 1790–1918
- The Origins of the First World War

Awarding Body: Pearson Edexcel

Duration: 2 years

Career Progression: History at A Level is viewed as a strong subject by all the top universities and is described as a facilitating subject which they like to see on applications from students. You don’t therefore have to go on to study History at University for it to be a useful A Level for you to take.

MAKE YOUR MARK

FOUND YOUR COURSE COMBINATION? EXPRESS YOURSELF – CIRCLE, UNDERLINE, HIGHLIGHT.





I was immediately drawn to the College for their top quality facilities and university links. There are so many opportunities available that will enhance your studies here, especially in sport; from residential trips and visits, to physio therapy workshops, the Talented Athlete Programme and Junior Elite Scholarship. Having been selected for the Junior Elite Scholarship for tennis, I am able to enhance my performance skills, make use of my free gym membership, and have access to bespoke workshops, all alongside my studies.

AMY LEES
Previously: Trentham Academy
Currently studying: A Level Geography, Physical Education & Psychology

MAKE YOUR MARK

WITH A CAREER IN

SPORTS & LEISURE

SPORTS & LEISURE

PERFORM & ACHIEVE

Discover how elite athletes achieve and maintain top fitness, what it takes to coach a team to success and the effects of exercise on the human body in this practical and dynamic Progression Pathway.

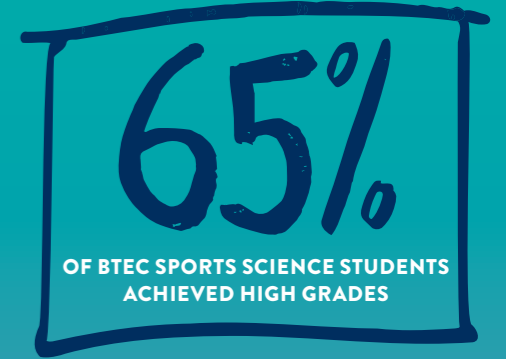
Train and learn in some of the best facilities in the area thanks to easy access to Staffordshire University and Fenton Manor Sports Complex, which offer grass and astro turf all-weather pitches, badminton and squash courts, several fully equipped gyms, a 25m swimming pool, exercise studios and sports arenas.

Learn about human anatomy, the importance of nutrition, how psychology helps teams to win and what fitness testing can reveal about particular training methods.

Put theory into practice through coaching placements in primary schools, high schools, academies, clubs and in the community. Challenge yourself to improve your own sporting performances and enjoy learning from teachers with experience in their subjects.

Our extensive sport and enrichment programme is available to all students offering a chance to take part in a variety of activities from archery to horse riding, badminton, squash or swimming – the choices are endless.

For more information on these subjects visit www.stokesfc.ac.uk



COURSES

A LEVEL/LEVEL 3
 – Physical Education

BTEC/LEVEL 3
 – Sport
 – Sport & Exercise Science





A LEVEL PHYSICAL EDUCATION

Assessed: Exam – 70%, Coursework – 15%, Practical – 15%

Topics Include:

- Scientific Principles of Physical Education
- Psychological and Social Principles of Physical Education
- Practical Performance
- Performance Analysis and Performance Development Programme

Awarding Body: Pearson Edexcel

Duration: 2 years

Career Progression: A wide range of careers in sport including, nutritionist, physiologist, physiotherapist, teacher, fitness professional, sports development officer, outdoor education instructor, sports psychologist and sport coach.



MAKE YOUR MARK

**FOUND YOUR COURSES?
DON'T LOSE THEM. GIVE
YOUR PEN A WORKOUT
– CIRCLE, UNDERLINE,
HIGHLIGHT.**

BTEC DIPLOMA SPORT

A Level Equivalent: 2 A Level

Assessed: External Assessment – 42%, Internal Assessment – 58%

Topics Include:

- Anatomy and Physiology
- Fitness Testing and Training
- Sport as a Business
- Sports Coaching
- Skill Acquisition

Awarding Body: Pearson Edexcel

Duration: 2 years

Career Progression: Studying this course could lead to Higher Education or directly into employment. Many of our students have progressed onto the following progression routes; Sports Coaching, Teaching, Leisure Management, Sports Journalism, Sports Retail, Sports Therapy, Fitness Instructing and Sports Development.

BTEC DIPLOMA OR EXTENDED DIPLOMA SPORT & EXERCISE SCIENCE

A Level Equivalent:

Diploma equivalent: 2 A Level
Extended Diploma equivalent: 3 A Level

Assessed: External Assessment – 42%, Internal Assessment – 58%

Topics Include:

- Psychology
- Anatomy and Physiology
- Sports Coaching and Injuries
- Technology in Sports Science

Awarding Body: Pearson Edexcel

Duration: 2 years

Career Progression: Studying this course could lead to Higher Education or directly into employment. Many of our students have progressed onto the following progression routes; Education/Training, Physiotherapy, Sports Nutrition, Sports Psychology, Biomechanics, Condition Coaching, Sports Technology Design and Physiology.



OUR BROAD RANGE OF COURSES



The STEM pathway offers a very supportive network for students and encourages you to work hard, try new things and to do the best you can. As well as your lessons, there are many extra-curricular activities and events which are really beneficial to your studies and personal development. Studying at the Sixth Form has inspired me to push myself and I am now looking at applying to study Biochemistry at either the University of Oxford or Cambridge.

FINLAY MCCUSKER

Previously: Endon High School
Currently studying: A Level Biology, Business Studies, Chemistry & Politics

MAKE YOUR MARK

WITH A CAREER IN

STEM SCIENCE, TECHNOLOGY, ENGINEERING & MATHS

For more information on these subjects visit www.stokesfc.ac.uk

STEM SCIENCE, TECHNOLOGY, ENGINEERING & MATHS

EXPERIMENT & DISCOVER

OVER
40%

HIGH GRADES IN A LEVEL BIOLOGY AND CHEMISTRY

Do you aspire to be a renowned surgeon? Could you have the vision to create the Shard or play a part in developing a ground-breaking cure for cancer? Or perhaps you'd like to use mathematics to work at GCHQ as a code-breaker or with the Met Office researching climate change?

Explore, experiment and discover the world around you as this Progression Pathway aims to spark your curiosity and take you on a journey which will push you to develop your problem solving skills and prepare you for a career in one of the fastest growing and most well paid sectors.

With access to state-of-the-art science facilities, opportunities to support and mentor mathematics and science students at local schools, take part in practical investigations,

field trips and visits to sites including Ainsdale Nature Reserve and the Peak District, how you learn won't be confined to a textbook.

For those students thinking of a medical or engineering career, we have dedicated programmes developed to compliment your studies with a series of dedicated personal support right at your fingertips. We will prepare you for medical admissions tests, support you in your engineering work placement, hone your interview skills so that you stand out from the crowd at university interviews and give you hands-on experience with a plethora of local businesses and medical institutions.

For more information on these subjects visit www.stokesfc.ac.uk

COURSES

A LEVEL/LEVEL 3

- Biology
- Chemistry
- Computer Science
- Further Mathematics
- Mathematics
- Physics
- Statistics

BTEC/LEVEL 3

- Applied Human Biology
- Applied Science
- Computing

T LEVEL/LEVEL 3

- Digital Production, Design and Development



A LEVEL BIOLOGY

Assessed: Exam – 100% + Practical Endorsement

Topics Include:

- Cell Structure
- Heart Structure
- Conservation
- Biodiversity

Awarding Body: OCR

Duration: 2 years

Career Progression: Studying Biology at the Sixth Form College gives you the opportunity to pursue a general or a more specialised Biology degree at university or even enter the job market directly and train with an employer such as the NHS. Careers can include: Forensic Scientist, Conservation Biologist, Toxicologist, Geneticist, Environmental Consultant, Pharmaceutical Sales Representative, Zoologist, Marine Biologist, and Forester.

A LEVEL COMPUTER SCIENCE

Assessed: Exam – 100%

Topics Include:

- Data Security and Compression Techniques
- Web Based Programming
- Working with Stakeholders
- Building Long Program

Awarding Body: OCR

Duration: 2 years

Career Progression: Students who take this subject may study Engineering, Software Engineering, Computing Science, Games Technology, Information Technology, Information Systems and many other subjects.

A LEVEL FURTHER MATHEMATICS

Assessed: Exam – 100%

Topics Include:

- Numerical Methods
- Hyperbolic Functions
- Work and Energy
- Power

Awarding Body: Pearson Edexcel

Duration: 1 year (taken in second year of study)

Career Progression: This course is ideal for any student who intends to study Mathematics or an area related to Mathematics at university. You could follow a course in Mathematics at degree level. Students frequently take subjects, which are strongly related to Mathematics such as Physics, Computing, Astronomy, Medicine, Veterinary Science, Psychology, Economics, Philosophy and many others.

MAKE YOUR MARK

HAD A STRONG REACTION TO ANY OF OUR COURSES? MARK IT – CIRCLE, UNDERLINE, HIGHLIGHT.



A LEVEL CHEMISTRY

Assessed: Exam – 100% + Practical Endorsement

Topics Include:

- Foundations in Chemistry
- Periodic Table and Energy
- Core Organic Chemistry
- Physical Chemistry and Transition Elements

Awarding Body: OCR

Duration: 2 years

Career Progression: Chemistry is an essential A Level to study for access to certain degree courses, such as Medicine, Veterinary Science and Dentistry. But is also advantageous in pursuing careers such as; Archaeology, Biomolecular Research, Engineering, Forensic Science, Geology, Industrial Chemistry, Pharmacology, Radiography.



A LEVEL MATHEMATICS

Assessed: Exam – 100%

Topics Include:

- Trigonometry
- Integration
- Correlation and Regression
- Newton's Laws of Motion

Awarding Body: Pearson Edexcel

Duration: 2 years (1 year – fast track)

Career Progression: Students can progress to careers in Economics, Medicine, Engineering, Architecture, Accountancy, Psychology, Geography, Finance, Computing and Information Technology or to courses where Mathematics will support their knowledge.

A LEVEL PHYSICS

Assessed: Exam – 100% + Practical Endorsement

Topics Include:

- Astrophysics
- Particles and Radiation
- Medical Physics
- Nuclear Physics

Awarding Body: OCR

Duration: 2 years

Career Progression: Physics is essential for Engineering, Physics, Astrophysics, Nanotechnology and useful for Maths, Computing, Radiology, Physiotherapy, Optometry, Medicine, Dentistry, and the Armed Forces.

A LEVEL STATISTICS

Assessed: Exam – 100%

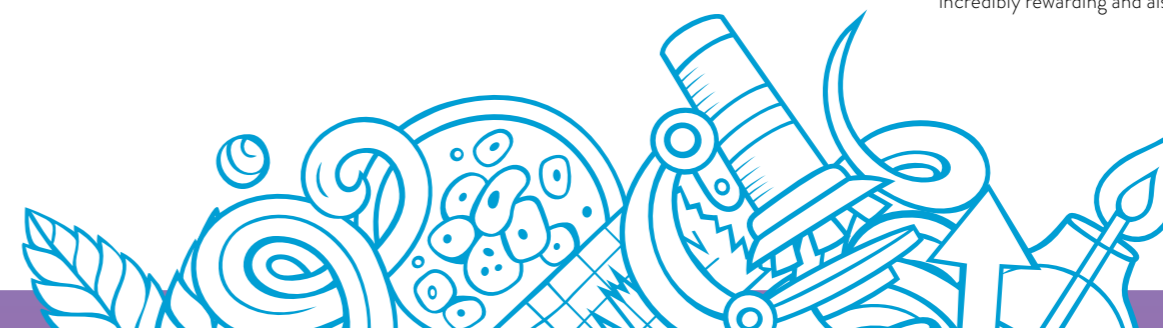
Topics Include:

- Correlation and Regression
- Statistical Investigation and Problem Solving
- Hypothesis Testing
- Sampling and Interpreting Data

Awarding Body: Pearson Edexcel

Duration: 2 years

Career Progression: Careers supported by the course include: Medicine, Dentistry, Pharmacy, Veterinary Science, Civil Service, Manufacturing, Data Analysts and many more. There is a world-wide shortage of statisticians and it is possible to follow a career as a professional statistician that is incredibly rewarding and also extremely well paid.



BTEC EXTENDED CERTIFICATE APPLIED HUMAN BIOLOGY

A Level Equivalent: 1 A Level

Assessed: Course Work – 42%, External Assessment – 58%

Topics Include:

- Principles of Applied Human Biology
- Practical Microbiology and Infectious Diseases
- Human Biology and Health Issues
- Functional Physiology

Awarding Body: Pearson Edexcel

Duration: 2 years

Career Progression: When combined with other relevant qualifications, learners can progress onto further study at higher education. Examples include:

- If combined with BTEC Sport and Exercise Science you could progress onto Sports Science degree courses.
- If combined with A Levels in Psychology and Sociology, for example, you could progress onto Nursing.

BTEC EXTENDED DIPLOMA APPLIED SCIENCE

A Level Equivalent: 3 A Level

Assessed: Exam – 30%, Coursework – 70%

Topics Include:

- Practical Scientific Procedures and Techniques
- Science Investigation Skills
- Laboratory Techniques and their Application
- Principles and Application of Science II

Awarding Body: Pearson Edexcel

Duration: 2 years

Career Progression: If your plan is to go straight into employment, you could work in a research laboratory, a quality control laboratory, a hospital laboratory, a materials testing laboratory, a forensic science laboratory or an environmental science laboratory. This course will also prepare you for continued study at university, graduates have gone on to study a range of science subjects at a range of universities.

BTEC EXTENDED CERTIFICATE COMPUTING

A Level Equivalent: 1 A Level

Assessed: Exam – 60%, External Assessment – 20%, Internal Assessment – 20%

Topics Include:

- Programming and Algorithms
- Principles of Computer Science
- Data Security and Encryption
- Web Based Applications

Awarding Body: Pearson Edexcel

Duration: 2 years

Career Progression: If you want to study courses like Information Management for Business, Business Computing, Business Information Systems, Food Science and Technology, Accounting and Finance, Electronic Media, and many others, this qualification will support your application.

T LEVEL DIGITAL PRODUCTION, DESIGN & DEVELOPMENT

A Level Equivalent: 3 A Levels

Assessed: Work Placement – 20%, Technical Qualification – 80% (made up of 100% External Assessment)

Topics Include:

- Cloud Computing
- Identifying Defects
- Proposing Software Solutions
- Relevant Industry Work Placement

Awarding Body: Pearson Edexcel

Duration: 2 years

T LEVEL

T Levels are new courses which will be offered in September 2020. T Levels will run across a two year period and will be equivalent to three A Levels. The new T levels will combine classroom theory, practical learning and an industry placement with an employer to make sure you have real workplace experience.

50 & THRIVING!
1970-2020



LEVEL 3 FOUNDATION PROGRAMME

Have you struggled at school, perhaps lacking in confidence, but have the commitment and ambition to succeed? Maybe you have been previously home schooled and need formal qualifications? Our Level 3 Foundation Programme will give you the qualifications and skills you need to progress.

GCSE ART & DESIGN

GCSE Equivalent: 1 GCSE
Assessed: Controlled Assessment – 60%, Externally Set Task – 40%
Topics Include:
 – Drawing
 – Painting
 – Mixed Media
 – Photography
Awarding Body: AQA
Duration: 1 year

GCSE COMBINED SCIENCE

GCSE Equivalent: 2 GCSE
Assessed: Exam – 100%
Topics Include:
 – Cells, Organs and Populations
 – Electricity and Radioactivity
 – How Science Works
 – Reaction Rates, Salts and Electrolysis
Awarding Body: AQA
Duration: 1 year

GCSE CLASSICAL CIVILISATION

GCSE Equivalent: 1 GCSE
Assessed: Exam – 100%
Topics Include:
 – Greek and Roman Myth and Religion
 – Roman City Life
Awarding Body: OCR
Duration: 1 year

GCSE ENGLISH LANGUAGE

GCSE Equivalent: 1 GCSE
Assessed: Exam – 100%
Topics Include:
 – Wilfred Owen poetry
 – Writing to Persuade
 – Reading Media texts
 – Writing for Purpose
Awarding Body: AQA
Duration: 1 year

GCSE MATHEMATICS

GCSE Equivalent: 1 GCSE
Assessed: Exam – 100%
Topics Include:
 – Number
 – Algebra
 – Probability
 – Data Handling
Awarding Body: AQA
Duration: 1 year

GCSE MEDIA

GCSE Equivalent: 1 GCSE
Assessed: Coursework – 60%, Exams – 40%
Topics Include:
 – Action and Adventure Films
 – Television Comedy
 – Analysis of the Way Different People Are Portrayed in the Media
 – Practical Skill Development for Video and Print Production
Awarding Body: OCR
Duration: 1 year

CAMBRIDGE NATIONAL CERTIFICATE IN CREATIVE MEDIA

GCSE Equivalent: 1 GCSE
Assessed: Exam – 25%, Coursework – 75%
Topics Include:
 – Pre-production Skills
 – Creating Digital Graphics
 – Designing a Game Concept
 – Developing a Digital Game
Awarding Body: OCR
Duration: 1 year

YMCA CERTIFICATE FITNESS INSTRUCTING

GCSE Equivalent: 1 GCSE
Assessed: Exam – 50%, Practical Assessment + Portfolio – 50%
Topics Include:
 – Anatomy
 – Physiology
 – Fitness Training and Programming
Awarding Body: YMCA
Duration: 1 Year
Good to Know: This qualification is aimed at the learner who wants to pursue a career in the health and fitness industry as a fitness instructor in the context of gym-based exercise.

LEVEL 2 CERTIFICATE FINANCIAL EDUCATION

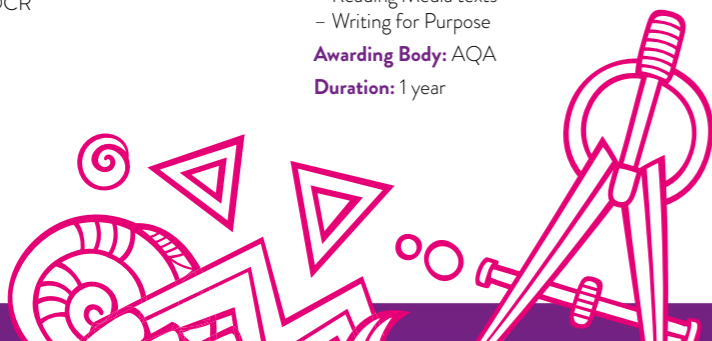
GCSE Equivalent: 1 GCSE
Assessed: 3 Units – each assessed separately:
 Units 1 and 2: Examinations and computer based multiple choice questions
 Unit 3: Pre-released case study
Topics Include:
 – Finance the Individual and Society
 – Practices of Managing Money
 – Financial Capability, Work and Experience
Awarding Body: London Institute of Finance and Banking
Duration: 1 year

CTEC HEALTH & SOCIAL CARE

GCSE Equivalent: 1 GCSE
Assessed: Exam – 50%, Coursework – 50%
Topics Include:
 – Principles of Working in Health, Social and Childcare Settings
 – Health and Safety
 – Working in a Person Centred Way
 – Safeguarding
Awarding Body: CTEC
Duration: 1 year

2x
 NATIONAL AVERAGE IN GCSE ENGLISH LANGUAGE
 10%
 ABOVE NATIONAL AVERAGE IN GCSE MATHEMATICS

MAKE YOUR MARK
FOUND YOUR COURSES? MAKE THEM STAND OUT – CIRCLE, UNDERLINE, HIGHLIGHT.



ACCESS TO LEARNING

WHICH LEVEL IS RIGHT FOR ME?

LEVEL 3 FOUNDATION PROGRAMME

Our Level 3 Foundation Programme is for students who do not initially meet the entry criteria for A Level or equivalent BTEC/vocational courses.

Designed to be a gateway for you to progress on to further study at the Sixth Form College, the Level 3 Foundation Programme is dedicated to giving you the skills and qualifications needed to progress.

Over a year, you will study an exciting and broad range of subjects from a choice of GCSEs and a range of vocational options, including BTEC courses. After successfully completing the Foundation Programme you will progress onto Level 3 study at the Sixth Form College.

Most careers, university courses and apprenticeships require at least a Grade 4 in GCSE English Language and Mathematics; students who haven't secured these grades will work towards achieving them whilst at College.

A LEVEL/BTEC/ VOCATIONAL LEVEL 3

Level 3 courses prepare you for entry to university, work or further training through an apprenticeship. We offer a broad range of A Level, BTEC or Vocational courses across a variety of subjects.

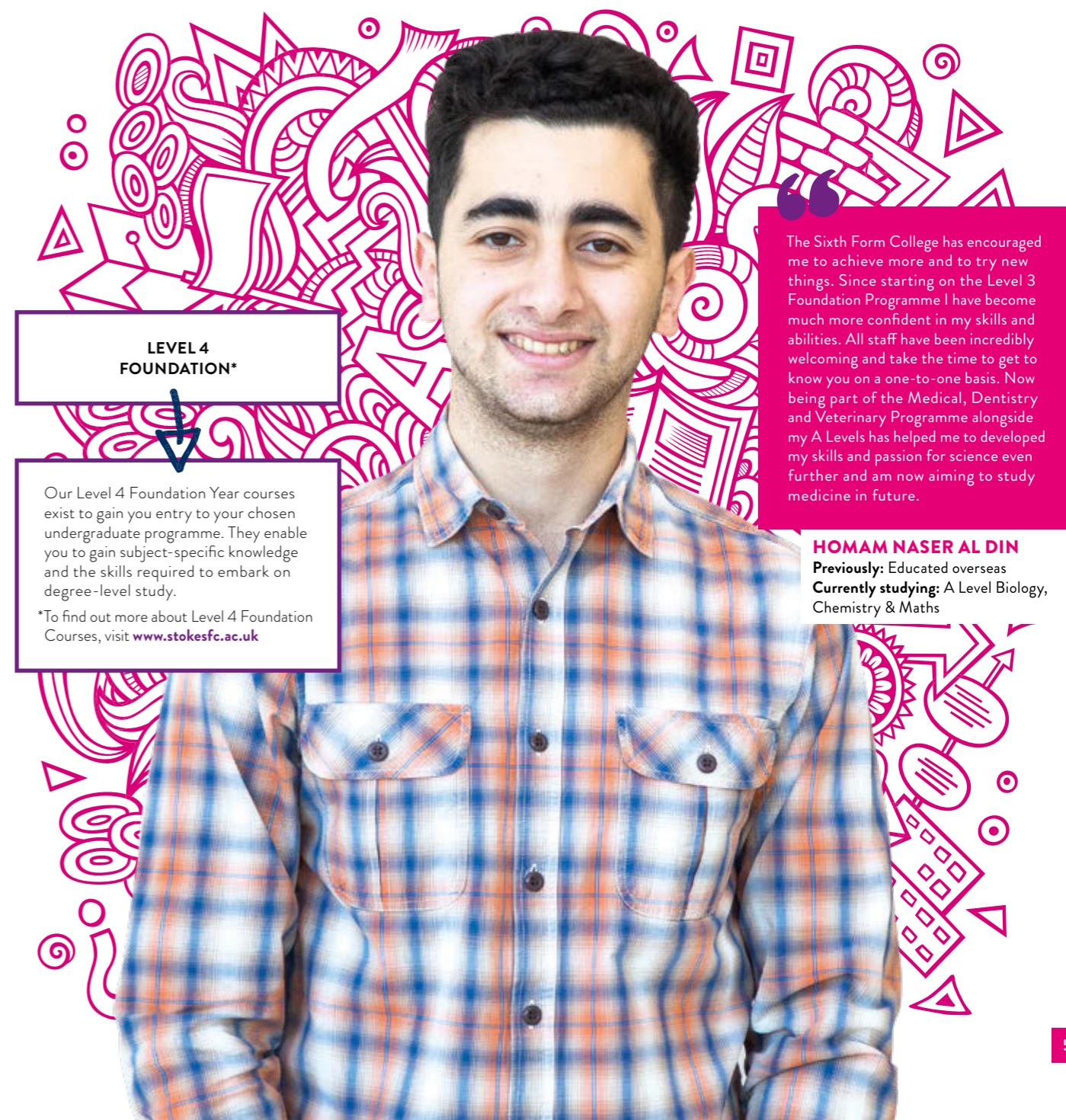
T LEVEL/LEVEL 3

T Levels are a brand new qualification designed to give you a head start towards your future. T Levels are the equivalent to three A Levels and incorporate work place learning into the curriculum. You'll spend 80% of your time in the classroom and 20% on a placement.

LEVEL 4 FOUNDATION*

Our Level 4 Foundation Year courses exist to gain you entry to your chosen undergraduate programme. They enable you to gain subject-specific knowledge and the skills required to embark on degree-level study.

*To find out more about Level 4 Foundation Courses, visit www.stokesfc.ac.uk



“

The Sixth Form College has encouraged me to achieve more and to try new things. Since starting on the Level 3 Foundation Programme I have become much more confident in my skills and abilities. All staff have been incredibly welcoming and take the time to get to know you on a one-to-one basis. Now being part of the Medical, Dentistry and Veterinary Programme alongside my A Levels has helped me to develop my skills and passion for science even further and am now aiming to study medicine in future.

HOMAM NASER AL DIN

Previously: Educated overseas
Currently studying: A Level Biology, Chemistry & Maths



WHAT'S NEXT?

APPLY

ONLINE

Applying online is quick and easy, all you need to do is visit our website at www.stokesfc.ac.uk click onto APPLY NOW and follow the instructions to complete your application.

If you have any questions about your application, please contact our friendly Admissions Team:

T: 01782 854221

E: admissions@stokesfc.ac.uk

W: www.stokesfc.ac.uk

*Paper application forms are available on request.

FIND YOUR FEET

Once you have made an application to study with us, you will be invited to our Find Your Feet event which takes place in late June. This is your opportunity to try out subjects, and to experience what life as a Sixth Form Student is all about.

BE SOCIAL



facebook.com
[/SOT6thformcollege](https://www.facebook.com/SOT6thformcollege)



twitter.com
[/SOT6FC](https://twitter.com/SOT6FC)



youtube.com
[/SOT6FC](https://www.youtube.com/SOT6FC)



instagram.com
[/isot6fc](https://www.instagram.com/isot6fc)

NEXT STEPS

ONCE WE HAVE RECEIVED YOUR APPLICATION, HERE'S WHAT WILL HAPPEN NEXT:



You will be invited into the College for a First Course Discussion Appointment, where you will discuss your application with a member of our staff.



After your First Course Discussion, you will be offered a provisional place to study the subjects that you have expressed an interest in.



Throughout the summer we'll send you plenty of information about what to expect from College life.



In late June we'll invite you to our Find Your Feet event which is a great chance for you to immerse yourself into life at the Sixth Form College, you will take part in subject sample sessions, discover our exciting student-led enrichment programmes as well as meet other like-minded students!



In August, once you have received your GCSE results, we will invite you back into the College for your Enrolment Appointment where you will have a final discussion to finalise your course choices and most importantly enrol as a City of Stoke-on-Trent Sixth Form student!

FIND OUT MORE

VISIT OUR OPEN EVENTS

Wednesday 9th October 2019

Thursday 7th November 2019

Tuesday 3rd December 2019

Thursday 19th March 2020

All Open Events take place from 5pm – 7pm

OPEN EVENTS 2019/20

Wednesday 9th October 2019

Thursday 7th November 2019

Tuesday 3rd December 2019

Thursday 19th March 2020

All Open Events take place from 5pm – 7pm

MAKE YOUR MARK



T: 01782 854221

E: admissions@stokesfc.ac.uk

W: www.stokesfc.ac.uk



[facebook.com
/SOT6thformcollege](https://www.facebook.com/SOT6thformcollege)



[twitter.com
/SOT6FC](https://twitter.com/SOT6FC)



[youtube.com
/SOT6FC](https://www.youtube.com/SOT6FC)



[instagram.com
/sot6fc](https://www.instagram.com/sot6fc)

